



ACCELERATING ACADEMIC BIOTECH

Autobahn Labs Overview

April 2025

Autobahn Labs is an accelerator for the translation of novel academic science



Our Mission

To accelerate academic breakthroughs into transformational therapies

Our Investors



How We Operate

- 1 Identify the most innovative ideas in academic biotech
- 2 Validate therapeutic hypotheses in capital-efficient manner
- 3 Transform academic science into de-risked drug candidates

Autobahn transforms academic research into de-risked drug programs

Our differentiation

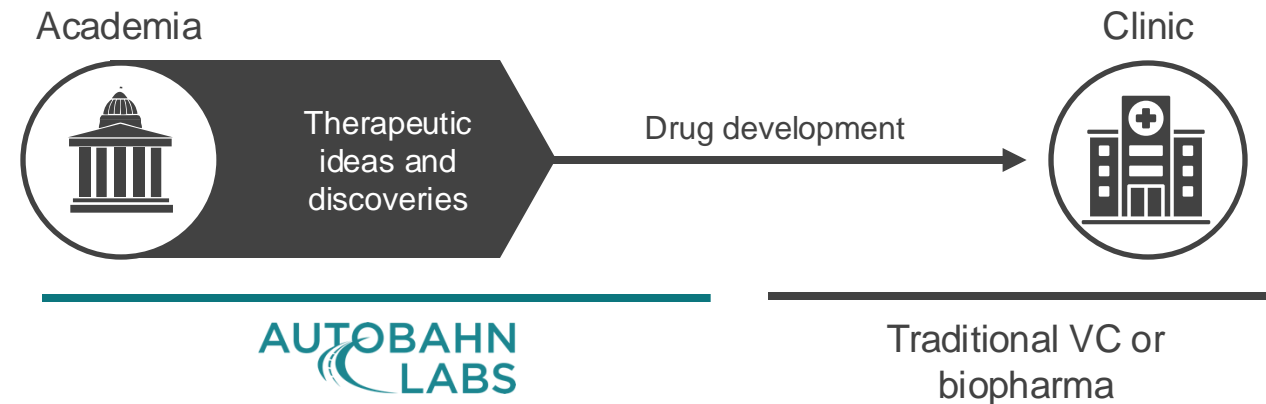
Early-stage investment. We invest in first-in-class therapeutics sourced from leading academic institutions

Master agreements. Pre-negotiated economic terms enable rapid program initiation and win/win scenarios for all stakeholders

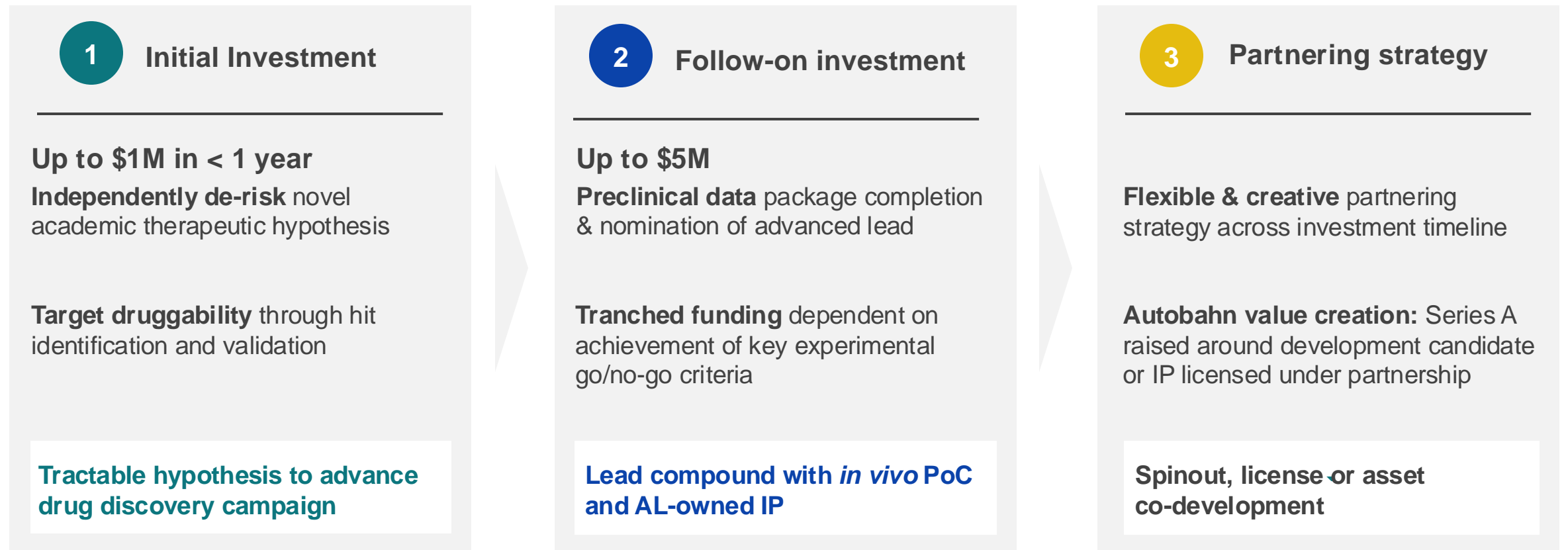
Academic partnerships. Long-term university relationships are built on a commitment to detailed feedback and transparency

Preferred CRO partner. Charles River Lab's investment provides priority access to best-in-class drug discovery capabilities

We invest earlier than traditional VC or biopharma



Our investment model is capital efficient and focused on value creation through key preclinical milestones



Autobahn leverages master agreements and university relationships

Our University Ecosystem



UC San Diego



UCLA



University of California
San Francisco



PENN



Master agreements at 9 top-tier partner institutions

- Long-term relationships are built for discovery of novel targets before public disclosure
- Pre-negotiated, favorable economic terms enable rapid program initiation

Sourcing Strategies

Collegial TTO relationships Champions for Autobahn at universities, bridge to PIs

Campus presence & engagement On-site visits, participation in university accelerators, and commitment to thorough feedback

University Fellows On-campus trainees plugged into new discoveries

Search algorithms Identify first-in-class opportunities, KOLs and highly-networked PIs

We evaluate first-in-class therapeutic proposals across therapeutic areas and modalities

Search & Evaluation Criteria

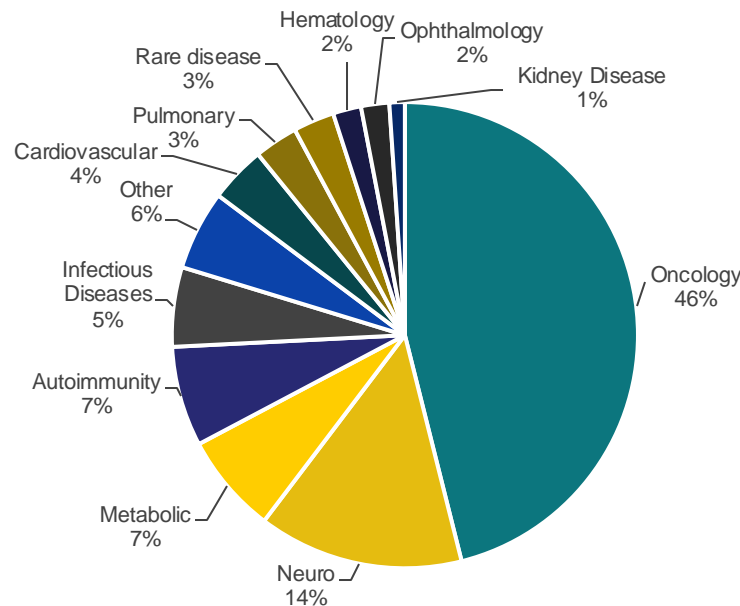
First-in-class opportunity Promising new target or novel therapeutic approach against well-validated target

High unmet need Well-defined patient population with insufficient standard-of-care

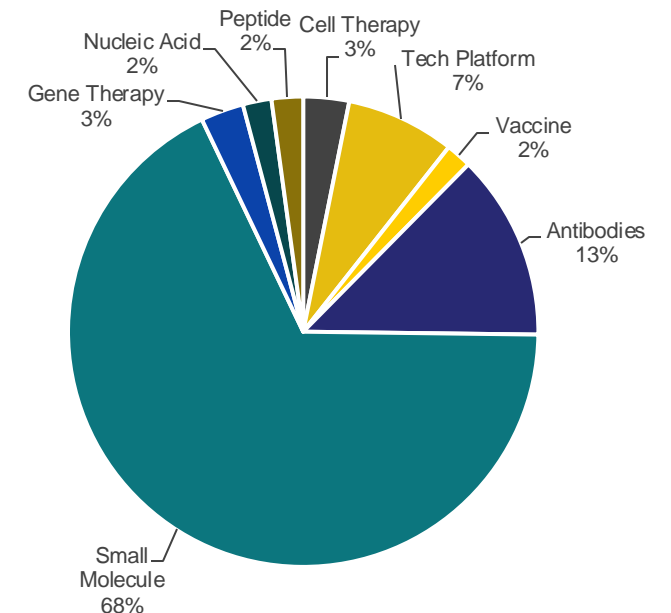
Key opinion leader PI with demonstrated accomplishment in the therapeutic area

Clear go/no-go Well-defined experiment to independently validate therapeutic hypothesis for <\$1M

Therapeutic Area



Modality



Autobahn has screened 900+ proposals since inception in 2020

Our diligence workflow

Preliminary



- Intro call with no requirement for a polished deck or project proposal
- Initial proposal triage followed by working session with full Autobahn core team
- Present proposal to extended Autobahn science team for real-time feedback



Advanced



- Identify and address key diligence questions to comprehensively understand opportunity
- Present to SAB for feedback from folks with 20-40 years of drug discovery experience
- Identify key preclinical experiments to de-risk therapeutic hypothesis and maximize value



Final



- Build workplans in collaboration with academic and strategic (e.g., CRL) partners
- Clear go/no-go preclinical inflection points to trigger tranced funds
- BoD pitch and final decision before program launch

Leveraging our relationship with Charles River Labs to drive drug discovery programs forward at industry standard

Equity Investor Benefits

- **Priority Access:** Direct connection to top industry teams.
- **Discounted FTE Rates:** Cost-effective resource utilization.

Strategic Benefits

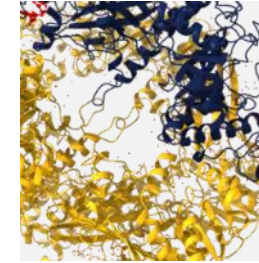
- **Single Point of Contact:** Streamlined communication from target ID to IND
- **BoD Collaboration:** CRL's active role in workplan development enhances project alignment

Operational Excellence

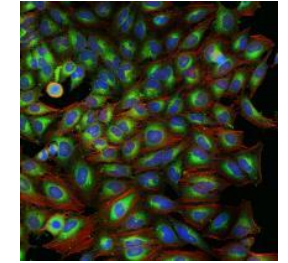
- **Executive Oversight:** Ensures strategic alignment and timely project deliverables
- **Global Coverage:** Efficient execution across all CRL sites and affiliates



Target discovery & validation
Human genomics / bioinformatics /
RNAi / CRISPR



Hit-finding & optimization
Small molecule to biologics



In vitro biology
Mechanisms to assays



In vivo pharmacology
PD, efficacy & phenotyping



Translational biomarkers
In vivo & *ex vivo* tools



Safety
Pharmacology to IND

Our preclinical portfolio spans disease areas and modalities

	Lead Indication	Target	Modality	Institution	<i>In vitro</i> PoC ¹	<i>In vivo</i> PoC ¹	Novel Chemical Matter	Early lead	IP Filed	Status
Late-stage Program	Type 1 diabetes	IRE1 α		UCSF	✓	✓	✓	✓	✓	LO & DC nomination
	MDS-associated anemia	CHRM4		CSHL	✓	✓	✓	✓	✓	LO & DC nomination
Early-stage Program	Solid tumors	Undisclosed		CSHL	✓	✓	✓	✓		LO
	Solid tumors	Undisclosed		Non-partner	✓	✓	✓			Target Validation
	Solid tumors	Undisclosed		BCH	✓					Hit ID
Equity Investment	Molecular glue platform ²	Multiple		UCSD spinout			✓			H2L
Out-License	Surgical bleeding	Plasmin		UCLA	✓	✓	✓	✓	✓	BD outreach

Key: Small molecule Peptide Monoclonal antibody

Our team of drug hunters has extensive experience across disease areas and modalities

Core Team



Dushyant Pathak, PhD, MBA
Interim CEO



Thomas Novak, PhD
CSO



Dimitre Simeonov, PhD
Director, S&E



Jared Feldman, PhD
Associate, BD



Our scientific advisors and investors have a strong track record in developing and advancing therapeutic programs



Samsara Advisors



David Parry, PhD
Venture Partner,
Samsara BioCapital



Stephen Shuttleworth, PhD
Venture Partner,
Samsara BioCapital



Levi Smith, PharmD, PhD
Senior Associate,
Samsara BioCapital



Bob Stein, MD, PhD
Venture Partner,
Samsara BioCapital

Scientific Advisors



John Curnutte, MD, PhD
Former EVP R&D,
Portola Pharma



Steve Kelsey, MD
President R&D,
Revolution
Medicines



James Larrick, MD, PhD
Founder, Panorama
Research Institute



Katherine Widdowson, PhD
Dir. of Respiratory
Chemistry & EIR, GSK

Board of Directors



Srini Akkaraju, MD, PhD
Managing Partner,
Samsara BioCapital



Abraham Bassan, MS
Principal,
Samsara BioCapital



Justin Bryans, PhD
CSO (Discovery),
Charles River Labs



Julie Frearson, PhD
SVP & CSO,
Charles River Labs



ACCELERATING ACADEMIC BIOTECH

Contact Information

Dushyant Pathak: dushyant@autobahn-labs.com

Tom Novak: tom@autobahn-labs.com

Dimitre Simeonov: dimitre@autobahn-labs.com

Jared Feldman: jared@autobahn-labs.com